

# METROCHIC



ceramica  
**SANT'AGOSTINO**



# METROCHIC



Generare continui movimenti e temi ed armonie di strutture, linee, disegni e colori, intonati su quinte di ceramica dotate di una musicalità visiva moderna ed elegante.

Questa è METROCHIC, una collezione in pasta bianca studiata per creare infiniti giochi da rivestimento con tre strutture tridimensionali bianche - a cerchi incavi, intrecci a canestro e ricami -, una carta da parati grafica e decorativa, cementine anche da pavimento sviluppate in 45 soggetti diversi - tutti nei toni del grigio e dal sapore vintage metropolitano -, un muretto colorato tipo maiolica satinata a tinta unita, un mini chevron ed un mini mosaico decorati a rilievo.

Basandosi su due fondi grigi ad "effetto cemento" - uno chiaro ed uno più scuro -, neutri ed esteticamente pulitissimi, ai quali si abbina il pavimento coordinato in gres, la collezione esprime la propria cifra estetica di vivace raffinatezza attualizzando stili, forme e pattern cromatici e geometrici del passato al gusto del design contemporaneo.

Creating continuous movements, themes and harmonies of structures, lines, designs and colours, with a modern and elegant visual musicality. This is METROCHIC: a white body collection designed to create countless wall games with white three-dimensional structures - in hollow circles, intertwining structures and embroidery. One graphic and decorative wallpaper pattern, even cementine floor tiles developed in 45 different subjects - all in shades of grey and metropolitan vintage flavour. One plain colour satin brick, one stitched-fabric effect - a relief decorated mini-chevron and mini-mosaic. Based on two concrete-effect grey plain tiles - a light one and a darker one -, neutral and aesthetically immaculate, combined with a matching porcelain floor, the collection shows its aesthetic refinement with styles, shapes, colour and geometric patterns from the past tailored to the taste of contemporary design.





Metrochic Light, Metropaper 3D-02  
Floor / Metrosigns



Metropaper 3D-02

> Metrochic Light, Metropaper 3D-02  
Floor / Metrosigns



# TRAME FLOREALI E GEOMETRICHE PER "CEMENTINE" DALLE TINTE NEUTRE IN 45 SOGGETTI DIVERSI

6

Floral and geometric patterns for  
"cement tiles" in neutral colours in 45  
different subjects

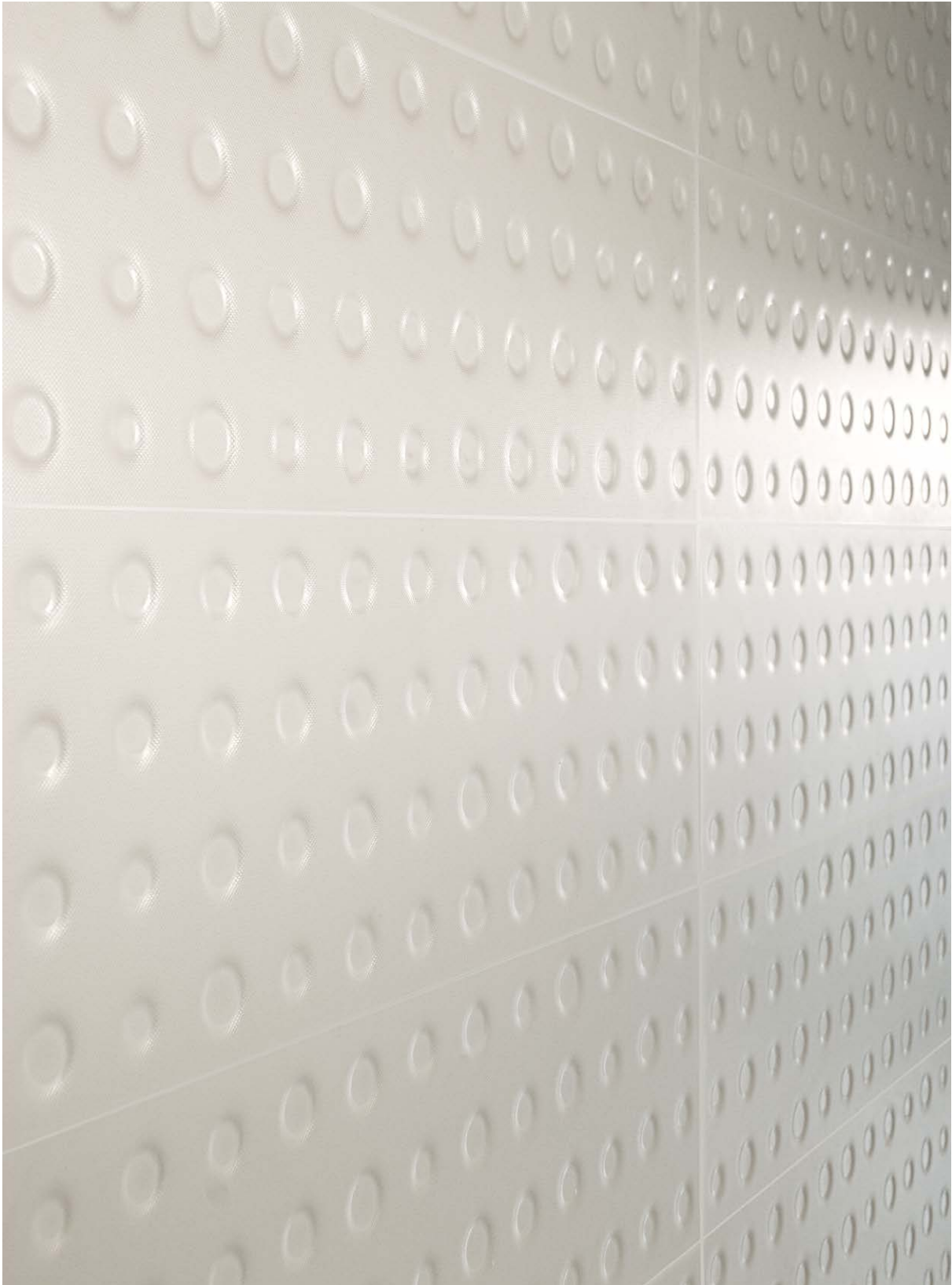
Blumenmuster und geometrische  
Muster für die « Cemente »  
in 45 neutralen Farbtönen mit  
unterschiedlichen Motiven

Motifs floraux et géométriques pour  
"cimentine" dans des couleurs neutres  
en composition composé par 45 sujets  
différents

Цветочные и геометрические узоры  
на цементной плитке нейтральных  
тонов в 45 различных вариантах







Metropaper 3D-03

> Metrochic Light, Metropaper 3D-03  
Floor / Metrosigns







Metrochic Light,  
Metropaper 3D-03  
Floor / Metrosigns

# CERCHI INTRECCI E RICAMI: LE QUINTE DEL BAGNO SI MUOVONO FRA STRUTTURE TRIDIMENSIONALI ED ARMONIE DI COLORE

12

Circle, weavings and embroideries:  
the bathroom scenes move between  
three-dimensional structures and color  
harmonies

Kreise, Geflechte und Stickereien:  
die Kulissen des Bades bewegen  
sich zwischen 3D-Strukturen und  
Farbharmonien

Cercles, trames et borderies : les scènes  
de la salle de bains se déplacent entre  
les structures en trois dimensions et les  
harmonies de couleur

Круги, переплетения и узоры  
- декорации ванной комнаты  
отличаются трехмерной текстурой и  
цветовой гармонией



...all the things  
...hands have been  
...the best by far  
...s you.









Metromosaic

> Metrochic Dark, Metropaper 3D, Metromosaic  
Floor / Set Tartan White 6060 (SET Collection)







Metrochic Dark, Metropaper 3D-01

Floor / Chevron Wood Sand (SHADEBOX Collection)

# L'ARTE DI METTERE IN SCENA TUTTI I RITRATTI DEL BAGNO MODERNO

20

The art of staging all the portraits of  
the modern bathroom

Die Kunst, alle Aspekte eines  
modernen Bades hervorzuheben

L'art de mettre en scène tous les  
portraits de la salle de bains moderne

Искусство продемонстрировать  
все образы современной ванной  
комнаты



Hers

His

117 L'A BRUNISTE  
TVÅL/SOAP  
Mejram/Socall

Cotton  
Balls  
Cotton  
Balls



Metrochevron

> Metrochic Dark, Metrochevron

Floor / Chevron Wood Sand (SHADEBOX Collection)











Metropaper

> Metrochic Dark, Metropaper

Floor / Chevron Wood Sand (SHADEBOX Collection)





Metrochic Dark, Metropaper

Floor / Chevron Wood Sand (SHADEBOX Collection)



# CROMIE, SUPERFICI E DISEGNI RICHIAMANO IL PASSATO ATTUALIZZANDO IL PRESENTE

30

Colors, surfaces and designs recall the past while enacting the present

Farben, Oberflächen und Muster erinnern an die Vergangenheit, indem sie die Gegenwart modern gestalten

Couleurs, surfaces et dessins rappellent au passé en actualisant le présent

Цвета, текстура поверхности и рисунки вызывают в памяти прошлое, осовременивая настоящее









Metrochic Light, Metrobrick

Floor / Chevron Wood Sand (SHADEBOX Collection)

# PROPOSTE DI PAVIMENTO FLOORING IDEAS

pag 2



pag 9



pag 14



pag 18



34



pag 24

pag 28

pag 32

Pavimento consigliato <i>Suggested floor</i>	Ambiente <i>Setting</i>							
	Pagina <i>Page</i>	2	9	14	18	24	28	32
Blendart White				•			•	
Nature Brown		•						
Revstone Cement		•	•	•	•	•	•	•
Shadewood Grey			•		•			
Shadewood Taupe		•		•		•	•	•
Wood Brown		•	•	•	•	•	•	•
Wood Nut		•	•	•	•		•	

Piastrelle in  
pasta bianca

White  
body tiles

Weisscherbige  
Fliesen

Carreaux en  
pâte blanche

Плитка из  
белой глины

EN 14411 APPENDICE L BIII GL

Rettificata

Rectified

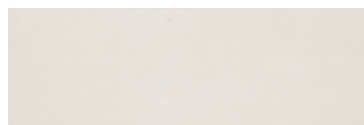
Kalibriert

Rectifié

Ректифицированная



RET 9,4mm



**Metrochic Light**

25x75 - 10"x30"



**Metrochic Dark**

25x75 - 10"x30"



**Metropaper**

25x75 - 10"x30"



**Metrobrick**

7,3x30 - 3"x12"



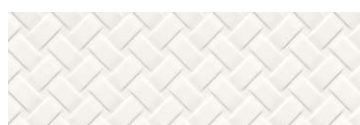
**Metropaper 3D**

25x75 - 10"x30"



**Metropaper 3D-01**

25x75 - 10"x30"



**Metropaper 3D-02**

25x75 - 10"x30"



**Metropaper 3D-03**

25x75 - 10"x30"

2x25 - 4/5"x10"

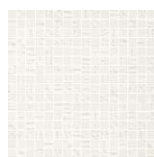
Listello Metropaper

### Su rete - On net - Auf Netz - Sur trame - Ha сетке



28x32,5 - 11"x13"

**Metrochevron**



30x30 - 12"x12"

**Metromosaic**

Gres porcellanato

Porcelain

Feinsteinzeug

Grès cérame

Керамогранит

EN 14411 APPENDICE G Bla GL

Rettificata

Rectified

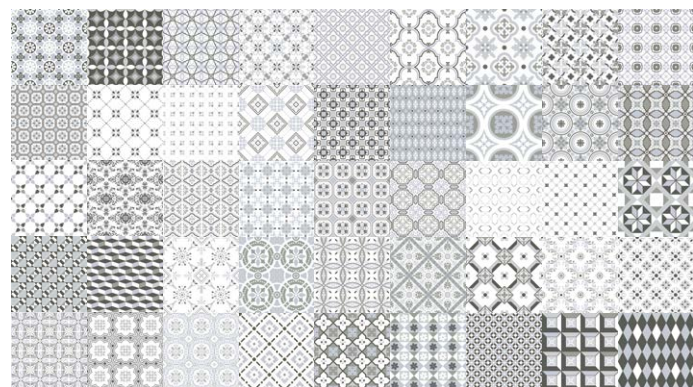
Kalibriert

Rectifié

Ректифицированная



RET 3 10mm



20x20 - 8"x8"

**Metrosigns**

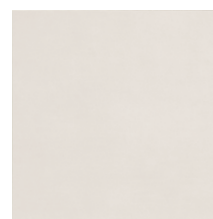
La decorazione **Metrosigns** si compone di **45 varianti grafiche**

The décor **Metrosigns** consists of **45 graphic variations**

Die Dekoration **Metrosigns** umfasst **45 grafische Varianten**

**Metrosigns** est composé par **45 décors différents**

Декор **Metrosigns** включает в себя **45 графических вариантов**



45x45 - 18"x18"

**Metrofloor Light**



45x45 - 18"x18"

**Metrofloor Dark**

**Pavimento coordinato**

Matching floor-tiles

Passend zu Wandfliesen

Coordonnés aux carreaux de sol

Напольная плитка из керамогранита

**Pezzi speciali** - Special pieces - Spezial-Stücke - Pièces spéciales - Специальных элементов



1,5x25 - 3/4"x10"

**Quarter Round Metrochic**

Light  
Dark

**Imballi e pesi** - Packing and weights - Verpackungen und Gewichte - Emballage et poids - Вес и упаковка

Formato Size Format форматы (cm)	Scatola/Box				Pallet			Montato su rete On net Auf Netz Sur trame Собрана на сетке
	Pzz./Scat. Pcs/Box Stck/Kart. Pcs/Boite Шт/Кор.	Mq/Scat. Sqm/Box Qm/Kart. Mc/Boite Кв.м/Кор.	Kg/Scat. Kg/Box Kg/Kart. Kg/Boite Кг в/кор.	Kg/Mq Kg/Sqm Kg/Qm Kg/Mc Кг в/Кв.м	Scatole Boxes Kart. Boites Коробок в палете	Mq Sqm Qm Mc Кв.м	Kg Kg в палете	
<b>25x75</b>	6	1,13	20	17,7	36	40,68	720	
<b>25x75</b> Metropaper 3D	5	0,94	17	18,1	36	33,84	612	
<b>28x32,5</b> Metrochevron	5	0,45	8	17,7	60	27	480	<
<b>30x30</b> Metromosaic	6	0,54	9,20	17,7	60	32,4	576	<
<b>7,3x30</b> Metrobrick	42	0,92	16,3	17,7	44	40,48	691	
<b>20x20</b> Metro signs	27	1,08	23,8	22	39	42,12	928	
<b>45x45</b> Metrofloor	6	1,22	26,8	22	26	31,72	697	

Nome Name Nom Название	Formato Size Format форматы (cm)	Pzz./Scat. Pcs/Box Stck/Kart. Pcs/Boite Шт/Кор.	Pzz./Comp. Pcs/Set Stck/Set Pcs/Set Штук в композиции	Comp./Scat. Set/Box Set/Kart. Set/Boite Композиций в коробке	Pannelli/Scat. Panels/Box Panneele/Kart. Panneaux/Boite Панелей в коробке
<b>List. Metropaper</b>	2x25	6			
<b>Quarter Round</b>	1,5x25	42			

**Consigli per la posa** - Suggestion for laying - Ratschläge für die Verlegung - Conseil pour la pose - Советы по укладке

<p>Viste le caratteristiche della serie si consiglia:</p> <ul style="list-style-type: none"> <li>Rivestimento</li> <li>Posa accostata</li> <li>Colore fuga Metrochic Light Metrochic Dark</li> </ul>	<p>Mapei 114 Mapei 114</p>	<p>Considering the characteristics of this series we suggest:</p> <ul style="list-style-type: none"> <li>Wall tiles</li> <li>No joint laying Grouting colour Metrochic Light Metrochic Dark</li> </ul>	<p>Mapei 114 Mapei 114</p>	<p>Im Hinblick auf die Eigenschaften der Serie es empfiehlt sich:</p> <ul style="list-style-type: none"> <li>Bodenfliesen</li> <li>Fugenfreie Verlegung</li> <li>Farbe der Fuge Metrochic Light Metrochic Dark</li> </ul>	<p>Mapei 114 Mapei 114</p>	<p>Vu les caractéristiques de la série, nous conseillons:</p> <ul style="list-style-type: none"> <li>Carreaux pour murs</li> <li>Pose bord a bord</li> <li>Couleur de joint Metrochic Light Metrochic Dark</li> </ul>	<p>Mapei 114 Mapei 114</p>	<p>В силу характеристик данной серии рекомендуется:</p> <ul style="list-style-type: none"> <li>Настенная плитка</li> <li>Укладка сближена</li> <li>Цвет шов Metrochic Light Metrochic Dark</li> </ul>	<p>Mapei 114 Mapei 114</p>
<ul style="list-style-type: none"> <li>Pavimento <b>Metrofloor</b> Fuga 2-3 mm</li> </ul>		<ul style="list-style-type: none"> <li>Floor tiles <b>Metrofloor</b> 2-3 mm joint</li> </ul>		<ul style="list-style-type: none"> <li>Wandfliesen <b>Metrofloor</b> 2-3 mm. Fuge</li> </ul>		<ul style="list-style-type: none"> <li>Carreaux pour sol <b>Metrofloor</b> Joint 2-3 mm</li> </ul>		<ul style="list-style-type: none"> <li>Напольная плитка <b>Metrofloor</b> Шов 2-3 мм</li> </ul>	

**Certificazioni** - Certifications - Zertifizierungen - Certifications - Сертификаты



## Simbologia - Symbols - Symbole - Symboles - Условные обозначения

RET

### Rettificata

Rectified  
Kalibriert  
Rectifié  
Ректифицированная



### Ingelivo

Frost-resistant  
Frostsicher  
Résistance au gel  
Морозостойкая

3

### Gruppo di usura superficiale

Surface abrasion group  
Abrieb  
Degré de usure superficielle  
Группа истираемости поверхности



### Spessore mm

Thickness mm  
Dike mm.  
Épaisseur mm  
Толщина MM

**THANKS TO:**  
Zucchetti. Kos



Imballi, colori e misure sono soggetti a inevitabili variazioni.  
Le informazioni contenute nel presente catalogo sono il più possibile esatte, ma non sono da ritenersi legalmente vincolanti.

Packings, colours and sizes are subject to inevitable variations.  
The information contained in this catalogue is correct to the best of our knowledge, but it is not construed as legally binding.

Verpackungen, Farbe und Masse der Fliesen unterliegen unvermeidlichen Veränderungen.  
Die im vorliegenden Katalog enthaltenen Angaben sind so genau wie möglich gehalten, sind aber auch rechtlich nicht verbindlich.

Changements de poids, nuances et dimensions sont typiques et inevitable.  
Les renseignements donnés dans ce catalogue sont le plus possible exacts, sans avoir effet obligatoire.

Упаковка, цвет и размеры могут претерпевать неизбежные изменения.  
Вся содержащаяся в настоящем каталоге информация максимально точная, но она не является юридически обязывающей.

ceramica  
**SANT'AGOSTINO**

Via Statale, 247 - 44047 S. Agostino (FE) ITALY

T. +39 0532 844111

F. Italia + 39 0532 846113

F. Export + 39 0532 844209

info@ceramicasantagostino.it

[www.ceramicasantagostino.it](http://www.ceramicasantagostino.it)



#AgostinoLover